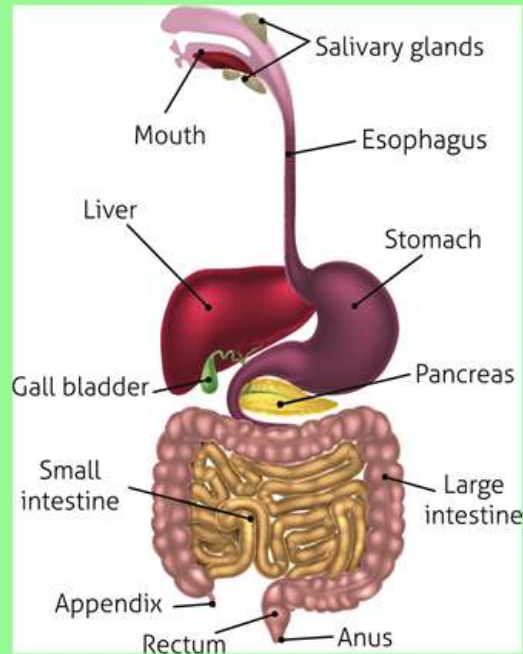


Week 4 - The digestive system

Lesson 3

L.O: I know the roles of different body parts in digestion.



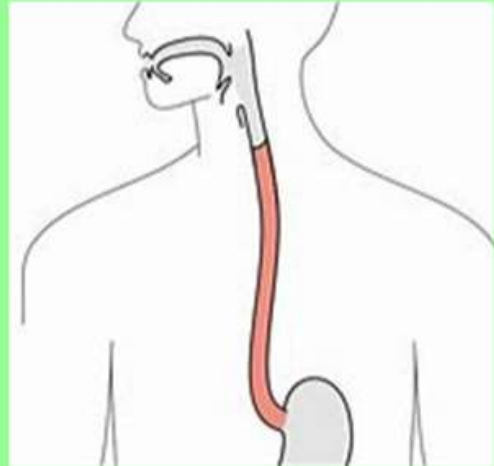
Mouth

This is where digestion begins. The teeth help break down the food into smaller pieces.



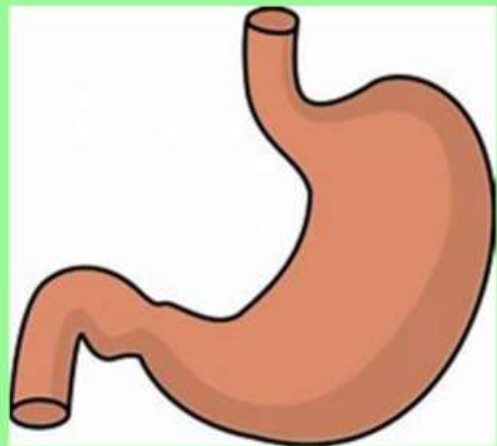
The saliva in the mouth also starts digesting the food and breaking it down.

Oesophagus



The **oesophagus** connects your mouth and stomach. It has muscles within it that work in waves to move the food you have eaten down into your stomach.

Stomach



The **stomach** is a stretchy sack where food is broken down by acids and enzymes. Once it is broken down, it becomes a substance called chyme. It also connects to other parts of the digestive system.

Small intestine



The **small intestine** is a stretchy tube. It breaks down the food mixture even more so your body can absorb all the vitamins, minerals, proteins carbohydrates and fats.

Large intestine



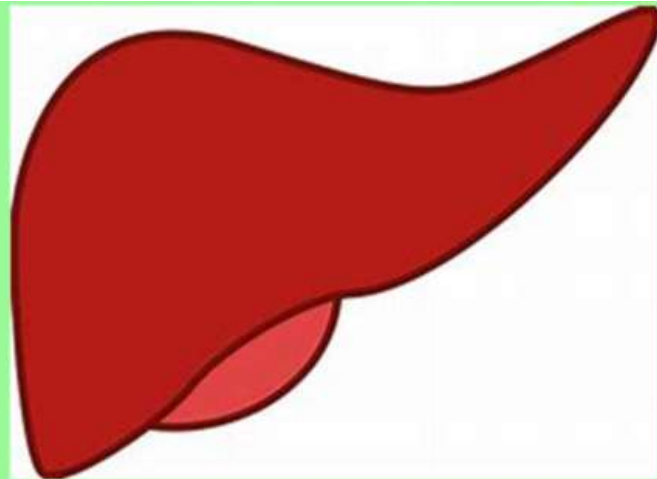
All the food material that is still unwanted passes through the **large intestine**. It is here that any last water or minerals are absorbed into the blood.

Gall bladder



The gallbladder is a pear-shaped organ that is located near the liver. It stores bile from the liver and releases it into the small intestines. The bile helps to digest fats.

Liver



1. The liver helps our bodies to get rid of toxins and waste from our blood. The liver creates bile that helps break down fats in the digestive system. The liver stores important vitamins and minerals from our food that our body needs to work properly.

Pancreas



The pancreas is really important for making sure that sugar (that we get from food) in our blood is not too high or too low. It also helps us to digest food by making 'enzymes' which break down our food.

Rectum



The rectum is found at the very end of our large intestine. As our food travels through our bodies, we take out everything we need and are then left with waste, which we know as poo. When the poo gets to our rectum, it sends a message to our brains to tell us to go to the toilet. It then pushes out the poo from our bottoms.

Can you use this information about our digestive system to fill in the worksheet?

You will need to draw diagrams and put what you have learned into your own words.

You do not need to write in full sentences, these are just notes

