

Science - Year 6

Living Things and their Habitats – Block 6LvH

Classification Connoisseurs

Session 2

Resource pack

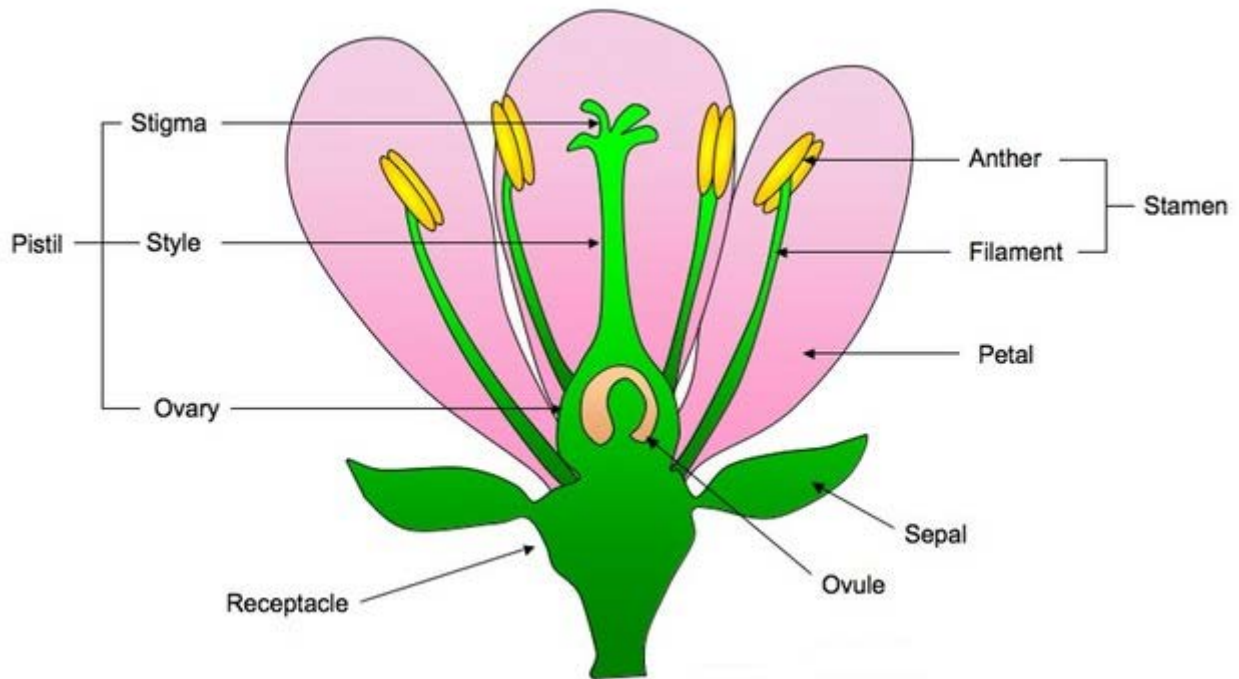
Odd one out







Labelled flower



The **stamen** consists of the anther and the filament.

The **carpel** consists of the stigma, style and ovary. The pistil is a fused group of carpels.

The **receptacle** is a thickened part of the stem from which the flower organs grow.

Buttercups

Goldilocks buttercup

Often found in woodland



Missing or deformed petals are common in this Goldilocks buttercup



Leaves on stem generally not hairy



Leaf at base of plant

Lesser celandine



7 to 12 petals usually



Heart-shaped leaves

Celery-leaved buttercup

This type of buttercup is found in wet places



Leaves are shown clearly



Small flowers

Bulbous buttercup



Flower showing turned-back sepals



Leaflets have stalks

Lesser spearwort



The leaves are not lobed



Some leaves have teeth

Creeping buttercup



Flower with grooved stem



The leaflets have stalks

Meadow buttercup



Leaves are hairy

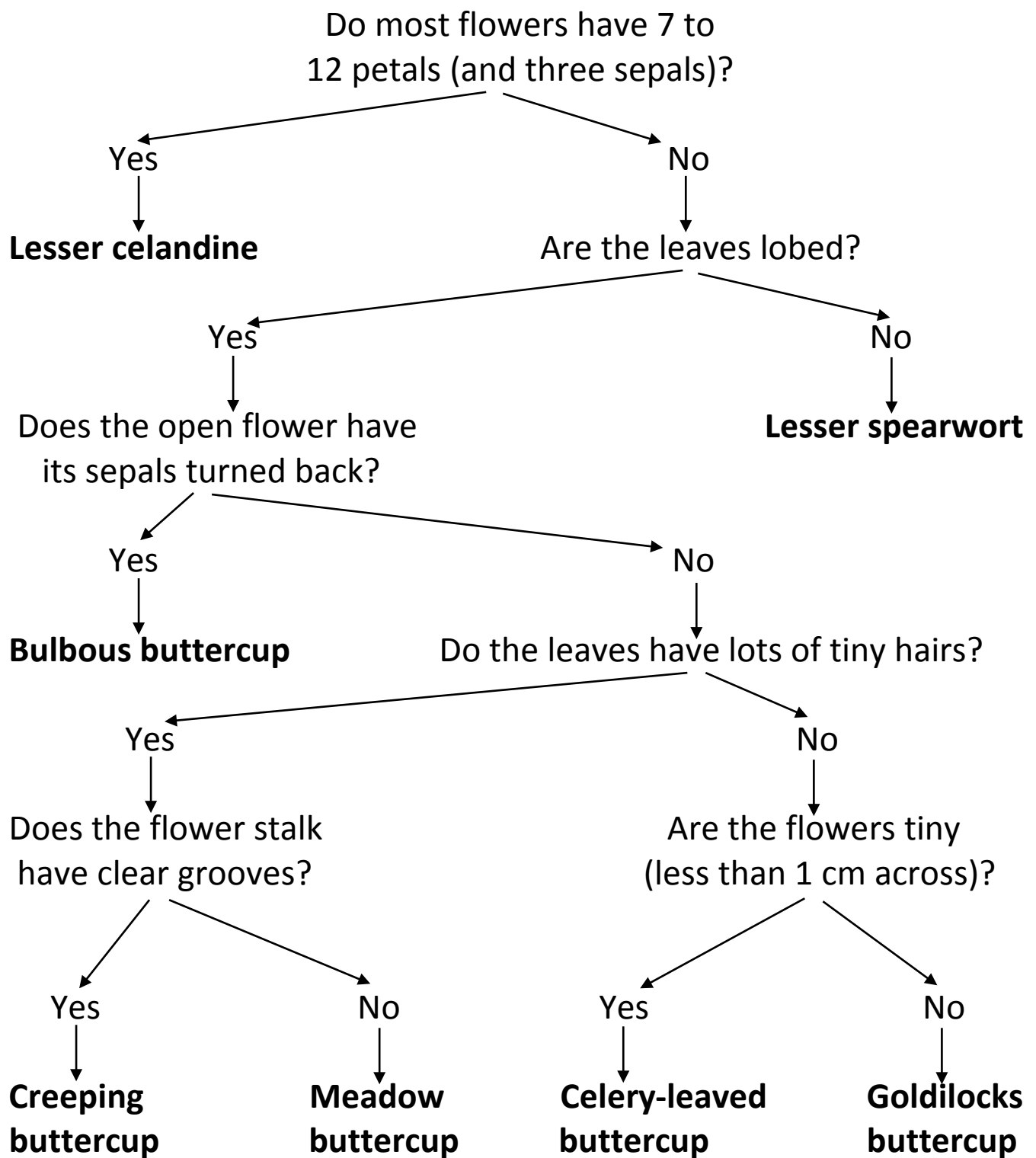


Leaflets do not have stalks



Flower stalk without grooves

Buttercup Classification Key



Classification Key for Buttercups (alternative layout)

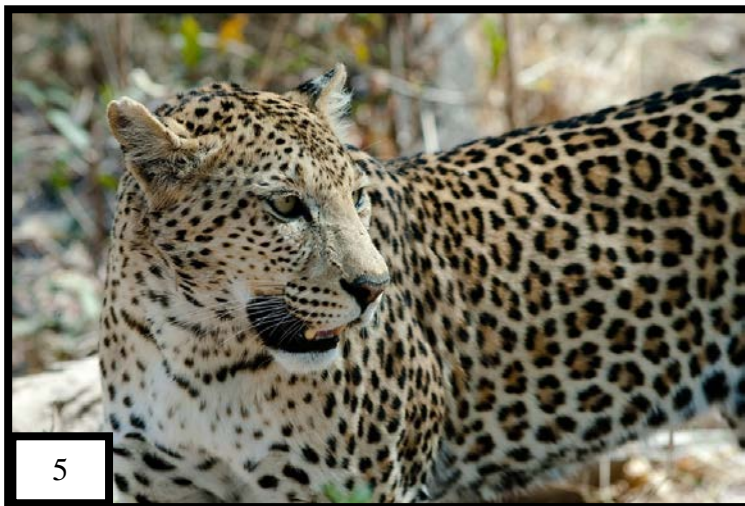
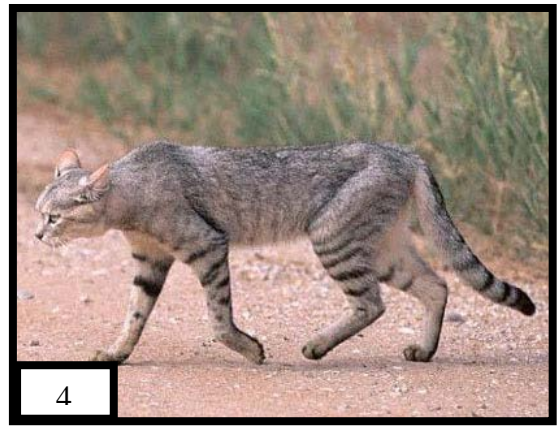
- 1.** Most flowers have 3 sepals and 7 to 12 petals: **Lesser celandine**
Most flowers have 5 sepals and 5 (or less than 5) petals: Go to 2

- 2.** The leaves are deeply lobed or divided into smaller leaves (leaflets): Go to 3
The leaves are not lobed: **Lesser spearwort**

- 3.** The open flower has upright sepals: Go to 4
The open flower has its sepals turned back: **Bulbous buttercup**

- 4.** The leaves are not hairy or have only a few hairs: Go to 5
The leaves have lots of tiny hairs: Go to 6

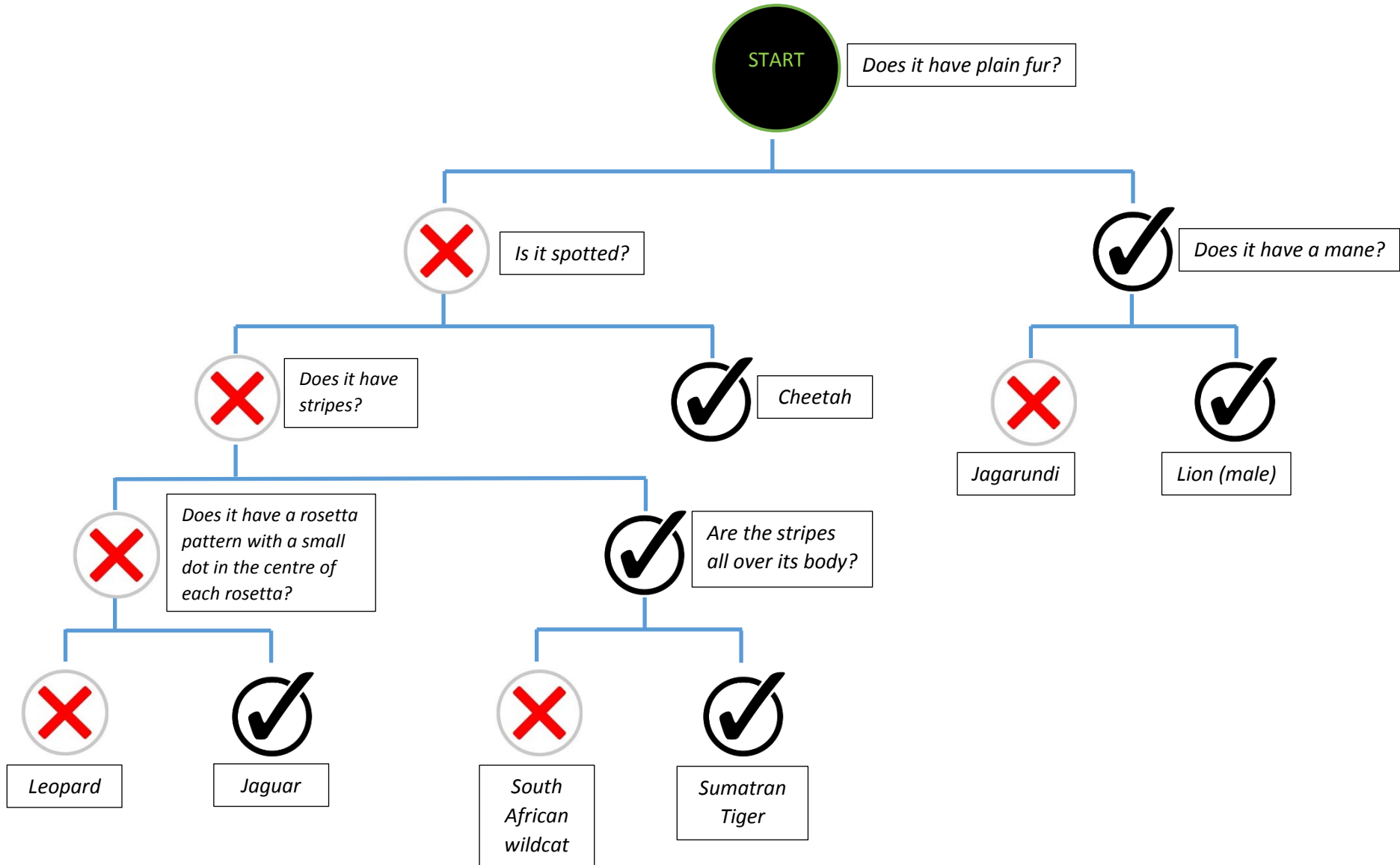
Cats for classification



Cat code

1. Cheetah
2. Jaguarondi
3. Jaguar
4. South African wildcat
5. Leopard
6. Lion (male)
7. Sumatran tiger

Cat Classification Key (copy onto A3)



Tricky customers

Manatees look like walrus, but biochemical analysis suggests that they are more closely related to elephants, armadillos, and hyraxes.



Fungi were once considered plants... are actually closer than they might seem to animals at a molecular level, and now (since 1969) have their own kingdom!



Archaeopteryx – Bird or dinosaur? After detailed characteristic analysis Chinese scientists reassigned Archaeopteryx to a dinosaur grouping having been considered a bird for a very long time!

