

Spelling lesson 1-Practise this week's spelling on Spelling frame

<https://spellingframe.co.uk/spelling-rule/54/54-Word-list-years-5-and-6---aw--to-cont->

Spelling lesson 2-write the word from this week's spellings that goes with the picture. Make sure you go back to slide 3 to check your spellings.

1. category

cat-e-go-ry

4. communicate

com-mu-ni-cate

7. conscience

con-science

10. awkward

awk-ward

2. cemetery

cem-e-ter-y

5. community

com-mu-ni-ty

8. conscious

con-scious

11. bargain

bar-gain

3. committee

com-mit-tee

6. competition

com-pe-ti-tion

9. controversy

con-tro-ver-sy

12. bruise

bruise





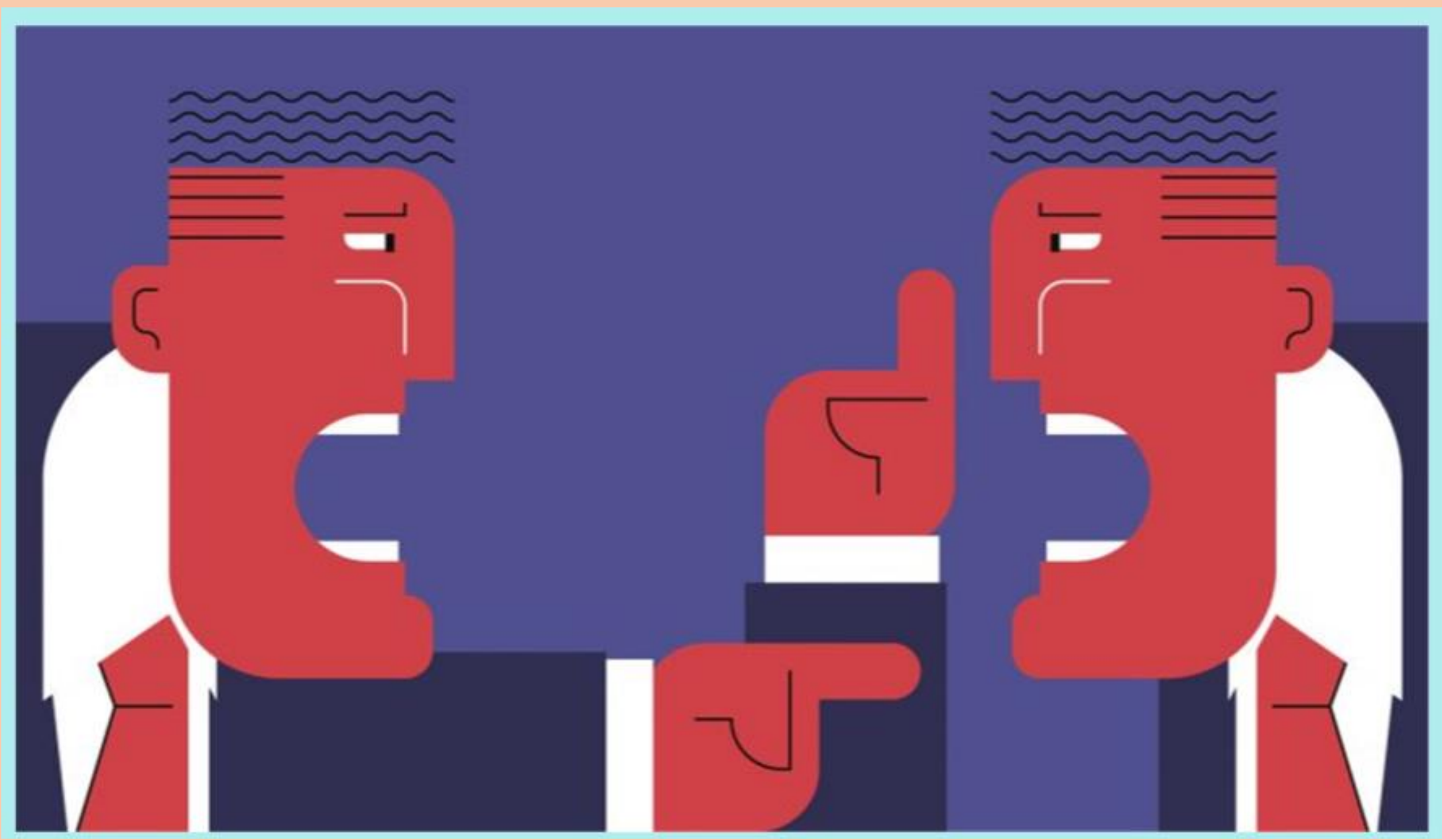


Enter!
to Win

















Spelling lesson 3-write the word from this week's spellings that goes with the definition. Make sure you go back to slide 3 to check your spellings.

a group of people living in the same place or having a particular characteristic in common

share or exchange information, news, or ideas

causing difficulty; hard to do or deal with

a class or division of people or things regarded as having particular shared characteristics

public disagreement or heated discussion

A person's moral sense of right and wrong.

a group of people appointed for a specific function

a thing bought or offered for sale much more cheaply than is usual or expected

a large burial ground